

# YOUTH RANGE CAMP

MONTANA

20  17

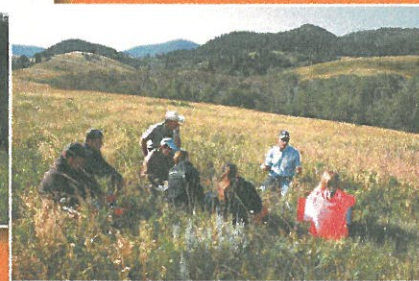
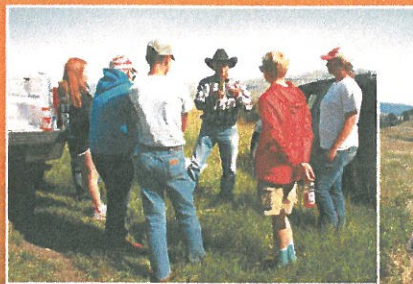
July 10 - 14  
McFarland White Ranch  
Two Dot, MT



Campers age 11-16 will be introduced to 25 of Montana's important range plants; grasses, forbs and shrubs. These youth will learn about the interaction of soils, water, plants, wildlife and livestock on the range. The camp provides an excellent opportunity for youth of varying backgrounds to become more aware of the value and potential of Montana's rangelands. This well-organized and balanced educational program brings together range professionals and interested students to learn in the great outdoors. Evening programs and activities allow campers an opportunity to meet new friends and develop lasting friendships!

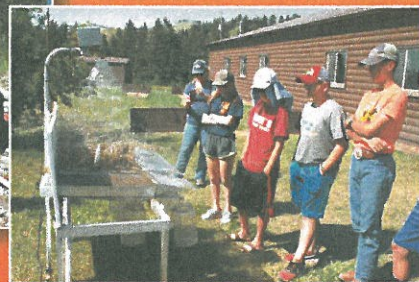
**Fun activities:**

- Hiking
- Fishing
- Swimming
- Survival Skills
- Campfires



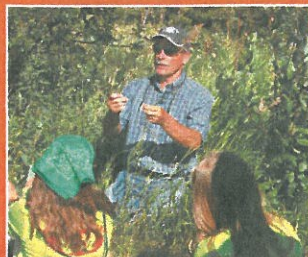
**Sponsored by:**

- Upper Musselshell and Cascade Conservation Districts
- DNRC
- NRCS
- McFarland White Ranch



**Classes:**

- Plant I.D. & Anatomy
- Soils/Geology
- Grazing Management
- Water/Riparian
- Range Monitoring



**Camp registration is \$200**

Conservation scholarships are available to help pay for part of the fee. Contact your local conservation district for more information.

**All applications need to be sent to:**

Upper Musselshell Conservation District  
Box 201  
Harlowton, MT 59036

**Sponsored by:**







<http://dnrc.mt.gov/divisions/cardd/camps/>  
or [Cascadecd.com](http://Cascadecd.com)

# Rangeland

